



Prole Street | Wolverhampton | WV10 9AD

Asking Price £150,000



Summary

****TWO BEDROOM TERRACE HOME** RENOVATED THROUGHOUT ** REFITTED KITCHEN ** REFITTED BATHROOM** ENCLOSED REAR GARDEN** TWO RECEPTION ROOMS** IDEAL FIRST TIME BUY** GENEROUS ROOM SIZES** CLOSE TO WOLVERHAMPTON CITY CENTRE****

Webbs Estate Agents are pleased to bring to market this recently renovated two bedroom terrace home situated within a close proximity to Wolverhampton City Centre this home offers amenities and road connections in an abundance. This property has undergone extensive works by its current owners and in brief comprises of: Lounge, Lounge/diner, refitted kitchen, refitted bathroom and cellar.

On the first floor there are TWO DOUBLE bedrooms one overlooking the front and the other to the rear.

Externally there is a courtyard garden which then leads to the rear garden which is mainly laid to lawn.

Call today on 01922 663399 to secure your viewing.

Key Features

- TWO BEDROOM TERRACE
- REFITTED KITCHEN
- TWO RECEPTION ROOMS
- CLOSE TO WOLVERHAMPTON CITY CENTRE
- PERFECT FIRST TIME BUY OR INVESTMENT
- RENOVATED THROUGHOUT
- REFITTED BATHROOM
- TWO DOUBLE BEDROOMS
- GENEROUS ROOMS SIZES
- CALL TODAY ON 01922 663399 TO SECURE YOUR VIEWING

Rooms and Dimensions

Lounge

12'2" x 12'3" (3.71m x 3.75m)

Dining Room

12'2" x 11'7" (3.71m x 3.55m)

Kitchen

13'7" x 6'1" (4.15m x 1.86m)

Bathroom

5'11" x 5'5" (1.81m x 1.67m)

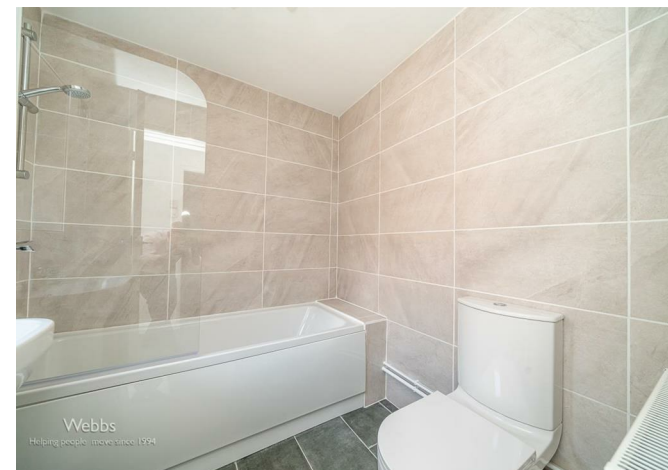
Cellar

Bedroom One

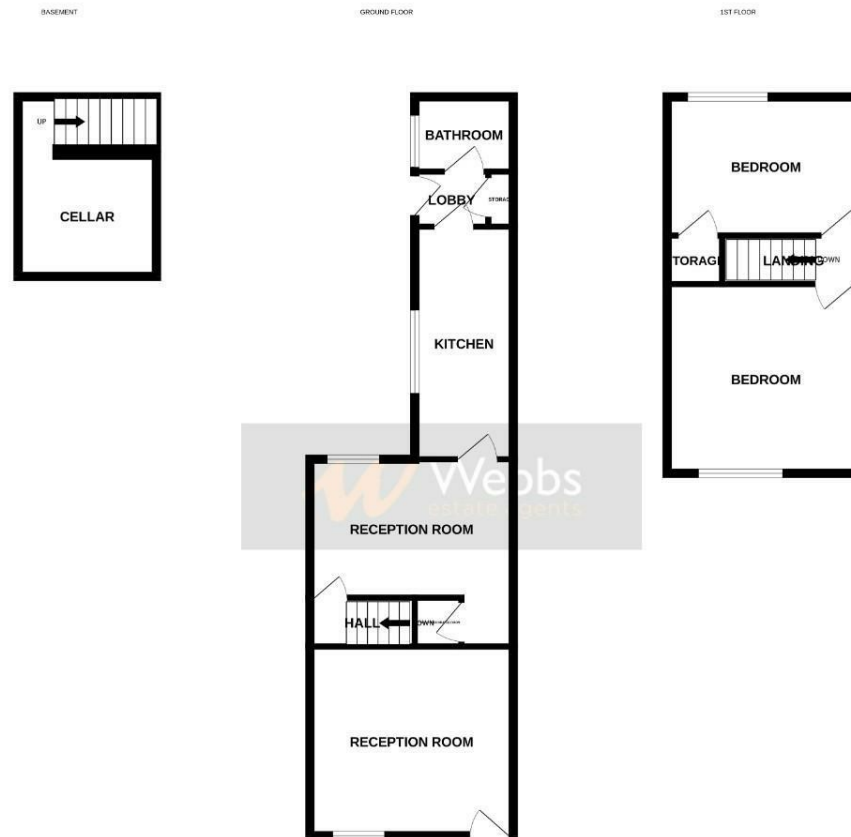
12'3" x 11'7" (3.75m x 3.54m)

Bedroom Two

12'4" x 11'7" (3.76m x 3.54m)







Whilst every attempt has been made to ensure the accuracy of the floorplans contained herein, measurements of doors, windows, rooms and any other items are approximate and no responsibility is taken for any error, omission or mis-statement. This plan is for illustrative purposes only and should be used as such for any prospective purchaser. The services, systems and appliances shown have not been tested and no guarantee as to their operability or efficiency can be given.
Made with Metropix ©2024

Webbs Estate Agents - endeavour to maintain accurate depictions of properties in Virtual Tours, Floor Plans and descriptions, however, these are intended only as a guide and purchasers must satisfy themselves by personal inspection.

Energy Efficiency Rating		Current	Potential
<p>Key energy efficiency - lower running costs</p> <p>78</p> <p>76</p> <p>74</p> <p>72</p> <p>70</p> <p>68</p> <p>66</p> <p>64</p> <p>62</p> <p>60</p> <p>58</p> <p>56</p> <p>54</p> <p>52</p> <p>50</p> <p>48</p> <p>46</p> <p>44</p> <p>42</p> <p>40</p> <p>38</p> <p>36</p> <p>34</p> <p>32</p> <p>30</p> <p>28</p> <p>26</p> <p>24</p> <p>22</p> <p>20</p> <p>18</p> <p>16</p> <p>14</p> <p>12</p> <p>10</p> <p>8</p> <p>6</p> <p>4</p> <p>2</p> <p>0</p>			
<p>Energy Efficiency Rating: A</p> <p>Energy Efficiency Rating: B</p> <p>Energy Efficiency Rating: C</p> <p>Energy Efficiency Rating: D</p> <p>Energy Efficiency Rating: E</p> <p>Energy Efficiency Rating: F</p> <p>Energy Efficiency Rating: G</p>			
<p>England & Wales</p> <p>EU Directive 2002/91/EC</p>			

Environmental Impact (CO ₂) Rating		Current	Potential
<p>Key environmental impact - lower CO₂ emissions</p> <p>78</p> <p>76</p> <p>74</p> <p>72</p> <p>70</p> <p>68</p> <p>66</p> <p>64</p> <p>62</p> <p>60</p> <p>58</p> <p>56</p> <p>54</p> <p>52</p> <p>50</p> <p>48</p> <p>46</p> <p>44</p> <p>42</p> <p>40</p> <p>38</p> <p>36</p> <p>34</p> <p>32</p> <p>30</p> <p>28</p> <p>26</p> <p>24</p> <p>22</p> <p>20</p> <p>18</p> <p>16</p> <p>14</p> <p>12</p> <p>10</p> <p>8</p> <p>6</p> <p>4</p> <p>2</p> <p>0</p>			
<p>Environmental Impact Rating: A</p> <p>Environmental Impact Rating: B</p> <p>Environmental Impact Rating: C</p> <p>Environmental Impact Rating: D</p> <p>Environmental Impact Rating: E</p> <p>Environmental Impact Rating: F</p> <p>Environmental Impact Rating: G</p>			
<p>England & Wales</p> <p>EU Directive 2002/91/EC</p>			

212 High Street, Bloxwich, Walsall, WS3 3LA

Tel: 01922 663399 | Email: bloxwich@webbestateagents.co.uk | www.webbestateagents.co.uk

